

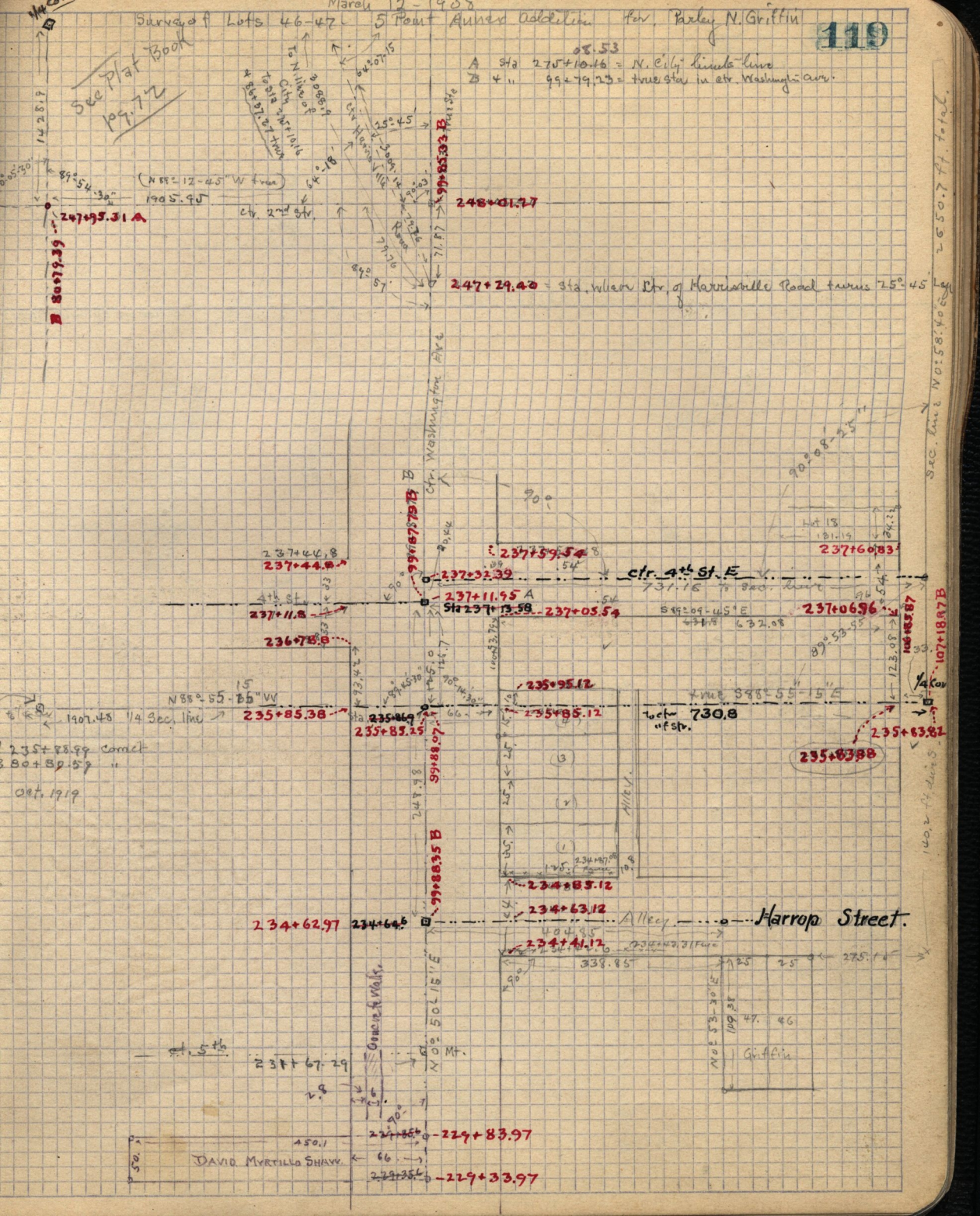
Survey of Lots 46-47

5 Point Annex Addition Per. Bailey N. Griffin

119

Sec. Plat Book  
pg. 72

A Sta 275+10.46 = N. City limits line  
B + " 99+79.23 = true star in ctr. Washington Ave.



Sec. Line N 0° 58' 40" E 2550.77 Total

107+18.7 B

120.2 ft. line

(N 88° 12' 45" W true)

247+95.31 A

200+9.39

248+01.77

247+29.40 = Sta. where ctr. of Harrosville Road turns 75° 45'

237+44.8  
237+44.8

237+11.8

236+78.8

237+59.54  
237+52.39

237+11.95 A  
Sta 237+19.58

235+95.12

235+85.38

235+83.25

235+85.12

237+60.83

237+06.96

235+83.88

235+63.81

234+62.97

234+64.5

234+63.12

234+41.12

233+67.29

229+83.97

229+33.97

DAVID MYRTLE SHAW

Griffin